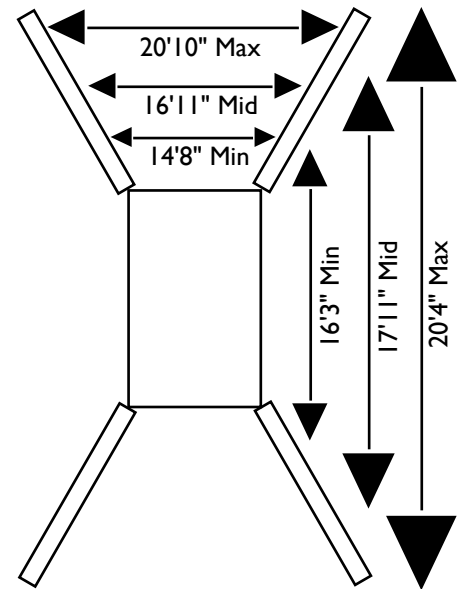
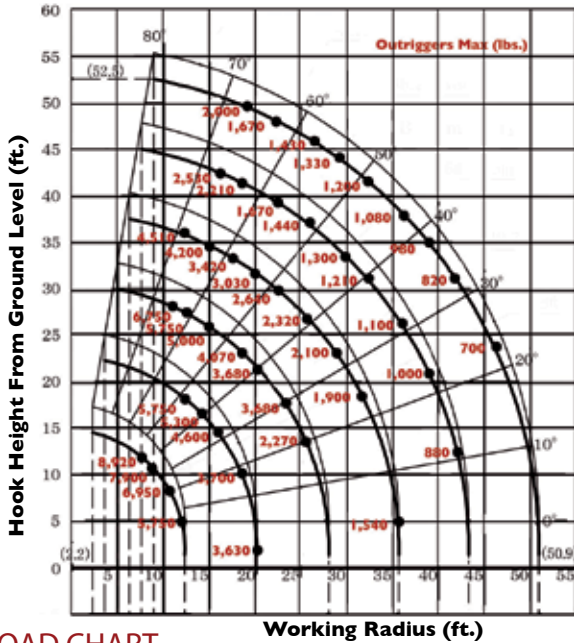




DESIGNED TO GO WHERE OTHER CRANES CAN'T

Engineered and manufactured by Japanese industry crane leader FURUKAWA UNIC Corp., the Spydercrane offers versatility, maneuverability and lifting capacity in a compact design that enables you to quickly, safely and easily meet all of your restricted and confined-area lifting requirements. They are distributed in North America by Spydercrane Sales, LLC. Each unit is backed by our 15-plus years of industry and application experience, complete inventory of genuine spare parts and accessories, and superior local service support.

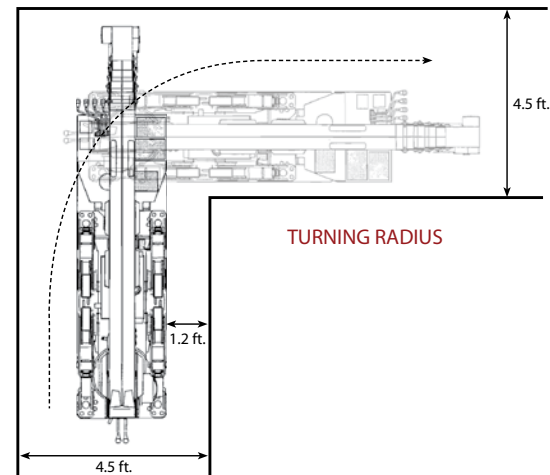
WORKING RADIUS



LOAD CHART

Lifting capacity varies depending on outrigger configuration and boom length and angle.

ALL BOOMS RETRACTED AND SECOND STAGE EXTENDED											
Working Radius (ft.)	8.0	9.5	11.0	13.0	14.0	16.0	19.0	19.5	20.1		
Outriggers Maximum (lbs.)	8,920	7,900	6,950	5,750	5,300	4,600	3,810	3,700	3,630		
Outriggers Halfway (lbs.)	8,920	7,900	6,950	5,600	5,050	4,300	3,360	3,230	3,100		
Outriggers Minimum (lbs.)	8,920	7,900	6,950	5,430	4,850	3,900	2,700	2,530	2,310		
THIRD STAGE EXTENDED											
Working Radius (ft.)	11.5	13.0	15.0	16.0	18.0	20.0	21.0	23.0	24.0	26.0	27.9
Outriggers Maximum (lbs.)	6,720	5,750	5,000	4,600	4,070	3,680	3,450	3,080	2,850	2,560	2,270
Outriggers Halfway (lbs.)	6,720	5,450	4,620	4,300	3,750	3,090	2,820	2,400	2,100	1,760	1,480
Outriggers Minimum (lbs.)	6,720	5,450	4,400	3,900	3,080	2,450	2,150	1,760	1,550	1,250	1,100
FOURTH STAGE EXTENDED											
Working Radius (ft.)	13.0	14.0	15.0	16.0	18.0	20.0	23.0	26.0	29.0	32.0	35.6
Outriggers Maximum (lbs.)	4,510	4,510	4,200	3,900	3,420	3,030	2,640	2,320	2,100	1,900	1,540
Outriggers Halfway (lbs.)	4,510	4,510	4,000	3,740	3,300	2,900	2,400	1,680	1,460	1,150	970
Outriggers Minimum (lbs.)	4,510	4,510	3,980	3,730	3,090	2,450	1,760	1,240	1,020	820	660
FIFTH STAGE EXTENDED											
Working Radius (ft.)	16.0	18.0	20.0	23.0	26.0	30.0	33.0	36.0	39.0	43.2	
Outriggers Maximum (lbs.)	2,530	2,210	1,980	1,670	1,440	1,300	1,210	1,100	1,000	880	
Outriggers Halfway (lbs.)	2,340	2,140	1,950	1,650	1,430	1,220	1,090	970	780	660	
Outriggers Minimum (lbs.)	2,310	2,090	1,850	1,540	1,230	960	760	660	550	440	
SIXTH STAGE EXTENDED											
Working Radius (ft.)	19.0	23.0	26.0	29.0	33.0	36.0	39.0	43.0	46.0	49.0	50.9
Outriggers Maximum (lbs.)	2,000	1,670	1,430	1,330	1,200	1,080	980	820	700	580	460
Outriggers Halfway (lbs.)	1,210	990	890	790	660	610	550	490	430	400	390
Outriggers Minimum (lbs.)	1,210	990	890	790	660	570	510	430	390	350	130



URW546 MINI-CRAWLER CRANE

		URW546CIURS	URW546CIUMRS
Crane capacity	Capacity:	8,920 lbs. @ 8.0 ft.	
Max working radius	Maximum:	2.2 to 50.9 ft.	
Max lifting height	Approximate:	52.5 ft.	
Turning radius (ft.)	Minimum:	TURNS WITHIN IT'S DIMENSIONS	
Dimensions (ft.)	Folded: (l x w x h)	16 X 4.52 X 6.67	16 X 4.52 X 6.67
Weight	Unladen:	10,825 lbs	11,155 lbs
Outrigger point loading	Maximum:	??? on standard outrigger pads	
Winch speed	Approximate:	Single line speed: 144.3 ft./minute at 4th layer Hook Speed: 36.1 ft./min at 4th layer with 4-part line	Diesel Electric Single line speed: 31.2 ft./minute at 4th layer Hook Speed: 32.8 ft./min at 4th layer with 4-part line
Telescopic system	Boom Length:	12.8 to 51.5 ft.	
	Hydraulic Telescopic with holding valves:	38.67 ft./35 sec	Diesel Electric 38.67 ft./35 sec 38.67 ft./48 sec
	Boom type:	6- section hydraulicity telescoping boom, hexagonal box construction	
Boom lift speed	Hydraulic with holding valves	0° to 80°/18 sec	Diesel Electric 0° to 80° /18 sec 0° to 80° /25 sec
Swing rotation	Worm Drive	360 degrees continuous	
Traction System	Travel Speed:	Two Speed	Low: 1.86 mph High: 3.92 mph
	Gradability:	23°	
	Track ground pressure:	6.54 psi	
Engine / Motor	Manufacturer:	Mitsubishi	Mitsubishi
	Fuel Capacity:	10.51 gal	10.51 gal DNA
	Maximum output:	24 HP	Diesel Electric 24 HP 10 HP
	Starting method:	Electric start as standard	
	Type:	Diesel	Diesel & Electric
Standard and safety equipment	Full-function radio remote, centrally located infinitely variable controls, onboard self-diagnostic computer system, hexagonal boom, anti-two block system, automatic hook stow system, hook safety latch, over-winding prevention device and alarm, working area limitation minimum wire rope automatic stop, hydraulic circuit pressure relief valve and bubble-style level for outrigger leveling, Rated Capacity Indicator, (L.M.I) Interlock Monitoring Outrigger System.		