



SPYDERCRANE[®]

URW095 SERIES

MINI-CRAWLER CRANE

WHAT IS A SPYDERCRANE®?

A SPYDERCRANE Mini-Crawler is a mini-crane that has been designed and built for working in low access confined areas either indoors or outdoors. It is mounted on a dual track chassis with "spider-type" legs for its outriggers.

SPYDERCRANES are revolutionizing many industries by offering a flexible and versatile crane that while strong enough to lift up to 6.6 tons*, can be used where a conventional truck mounted crane or carry-deck crane will not have access due to its size.



24"
*when stored
in travel mode*
wide



As the North American Distributor of SPYDERCRANES, Smiley Lifting Solutions has a wide range of mini-crawler cranes available. Whether your jobs are small or large, there is a SPYDERCRANE model that is the perfect fit. With a wide range of engine types and accessories available, we can provide you with a SPYDERCRANE to fit your exact needs.

* Based on specifications of the URW706 SPYDERCRANE

31^{ft}
Tip Height

1,990
lbs Capacity



U-WAVE
**Wireless Radio
Remote Control**

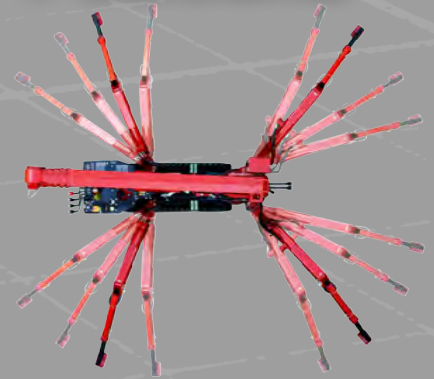
LOAD CHARTS

LOAD CHART

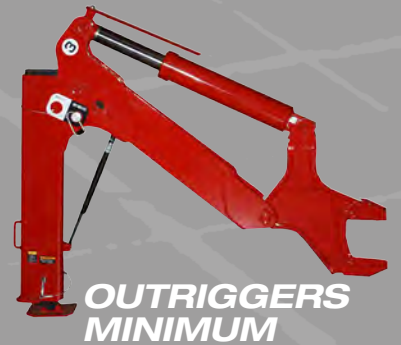
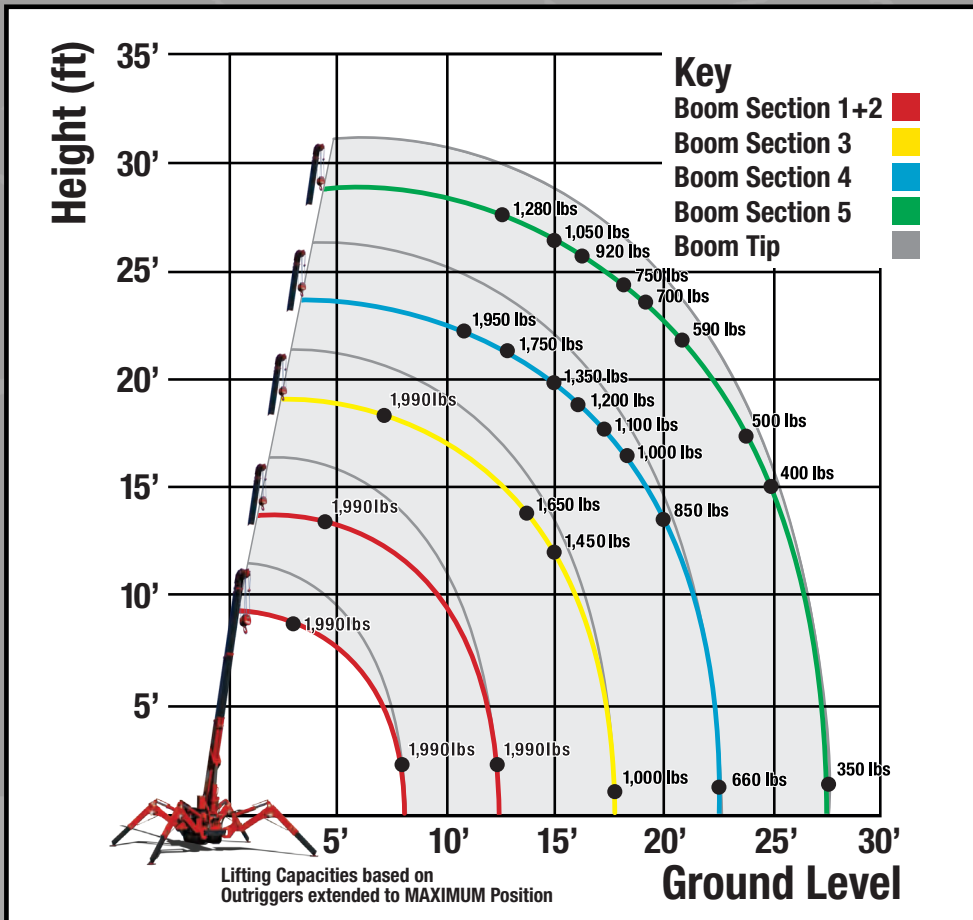
Lifting capacity varies depending on outrigger configuration and boom length and angle.

| BOOM SECTION 1 EXTENDED BOOM SECTION 1 + 2 EXTENDED | | | | | | | | | | |
|---|-------|-------|-------|-------|-------|-------|-------|-------|-------|-------|
| Working Radius (ft.) | 3 | 4.5 | 5 | 6 | 7 | 8 | 10 | 11 | 12.58 | |
| Outriggers Maximum (lbs.) | 1,990 | 1,990 | 1,990 | 1,990 | 1,990 | 1,990 | 1,990 | 1,990 | 1,990 | |
| Outriggers Minimum (lbs.) | 1,990 | 1,990 | 1,990 | 1,990 | 1,990 | 1,600 | 1,100 | 950 | 600 | |
| BOOM SECTION 1 + 2 + 3 EXTENDED | | | | | | | | | | |
| Working Radius (ft.) | 7 | 8 | 9.5 | 10 | 11 | 12 | 14 | 15 | 17.62 | |
| Outriggers Maximum (lbs.) | 1,990 | 1,990 | 1,990 | 1,990 | 1,990 | 1,950 | 1,650 | 1,450 | 1,000 | |
| Outriggers Minimum (lbs.) | 1,850 | 1,550 | 1,250 | 1,150 | 1,000 | 780 | 600 | 550 | 300 | |
| BOOM SECTION 1 + 2 + 3 + 4 EXTENDED | | | | | | | | | | |
| Working Radius (ft.) | 11 | 12.5 | 13 | 15 | 16 | 17 | 18 | 20 | 22.61 | |
| Outriggers Maximum (lbs.) | 1,950 | 1,950 | 1,750 | 1,350 | 1,200 | 1,100 | 1,000 | 850 | 660 | |
| Outriggers Minimum (lbs.) | 1,000 | 800 | 750 | 600 | 510 | 450 | 370 | 280 | 200 | |
| BOOM SECTION 1 + 2 + 3 + 4 + 5 EXTENDED | | | | | | | | | | |
| Working Radius (ft.) | 12.5 | 13.5 | 15 | 16 | 18 | 19 | 21 | 23 | 25 | 27.59 |
| Outriggers Maximum (lbs.) | 1,280 | 1,280 | 1,050 | 920 | 750 | 700 | 590 | 500 | 400 | 350 |
| Outriggers Minimum (lbs.) | 850 | 700 | 600 | 530 | 420 | 380 | 300 | 220 | 180 | 130 |









52
Possible
Outrigger
Positions



WORKING RADIUS



SPECIFICATIONS

| | URW095CP1URS & URW095CP1URS/P | URW095CP1UMRS & URW095CP1UMRS/P | URW095CP1UBRS | URW095C4URS | URW095C4UMRS |
|------------------------------|---|---|--|---|---|
| Engine / Motor |   |    |  |  |  |
| Engine Manufacturer: | Mitsubishi (Gas) | Mitsubishi (Gas) | DC | Kubota | Kubota (Diesel) |
| Maximum Output: | Gasoline - 13HP Propane - 11.7HP | Gasoline - 13HP Propane - 11.7HP Electric - 5HP/220V (Single Phase) | 48V Battery 110V Electric | 7.2kw | Diesel- 7.2kw Electric - 5HP/220V (Single Phase) |
| Tank Capacity: | 1.85 gal | 1.85 gal | | 2.7 gal | 2.7 gal |
| Starting Method | Electric and Recoil Start as Standard | | N/A | Electric Start | |
| Crane Capacity | 1,990 lbs @12.5 ft | | | | |
| Max Working Radius | 1.4 - 28.0 ft | | | | |
| Tip Height | 31 ft (37 ft with Jib) | | | | |
| Turning Radius | Turns within its dimensions | | | | |
| Dimensions when Folded (ft.) | 2.0 x 4.6 x 9.0 (W x H x L) | | | 2.0 x 4.6 x 9.1 (W x H x L) | 2.0 x 4.6 x 9.0 (W x H x L) |
| Weight | 4,200 lbs | 4,380 lbs | 4,360 lbs | 4,245 lbs | 4,425 lbs |
| Outrigger Point Loading | 152.2 psi on standard outrigger pads (7" x 4.5") (Specific point landing available upon request) | | | | |
| Hook Speed | Capacity: 1,955 lbs. at 4th layer 2-Part-Line | | | | |
| | 65 ft/min at 4th layer | 65 ft/min at 4th layer Electric: 52 ft/min at 4th layer | 60 ft/min at 4th layer | 65 ft/min at 4th layer | 65 ft/min at 4th layer Electric: 52 ft/min at 4th layer |
| Telescopic System | Boom Length: 8.3 ft (retracted) to 28.4 ft (extended) Boom Type: 5-Section hydraulically telescoping boom, with hexagonal box construction | | | | |
| Telescoping Speed | 20 ft / 20 seconds | | | | |
| Boom Lift Speed | 0° – 78° / 11 sec | Gas: 0° – 78° / 11 sec Electric: 0° – 78° / 15 sec | 0° – 78° / 15 sec | 0° – 78° / 11 sec | Diesel: 0° – 78° / 11 sec Electric: 0° – 78° / 15 sec |
| Traction System | Travel Speed: 0-1.43 mph | | | | |
| | Gradability: 20° | | | | |
| | Track Ground Pressure: 6.96 psi | | | | |
| Accessories & Options | <ul style="list-style-type: none">• SPYDERWEB 5-Axis fixed Glass Manipulator - Attaches directly to boom for rigid application• 6 ft offsettable Jib with Searcher Hook and Single-Line Swivel Ball• Custom SPYDERCRANE Trailer - Includes Track Mats, Tool Box, Outrigger Pads and Fuel Containers | | <ul style="list-style-type: none">• Auxilliary Winch Kit - 1,990 lb Single-Line Pull, 330 ft., 5/16" Wire Rope, 90 FPM at 6th Layer• MYLAR Non-Marking Tracks• Single-Part Reeving and Two-Part Reeving capability | | |



209 E. Corning Avenue
Peotone, Illinois 60468

(815) 931.4825
greatlakeslifting.com